



RETHINK YOUR RIDE

Twitter:  
@nowbindings

Instagram:  
@nowbindings

Facebook:  
/nowsnowboarding

www.now-snowboarding.com

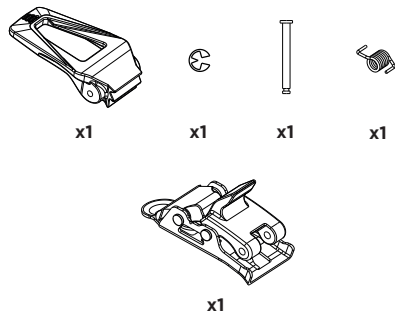


## BUCKLE UTILITY MANUAL

## Disclaimer and Warning

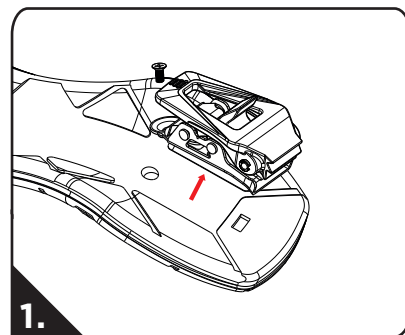


The information in this document affects your safety and your legal rights and responsibilities. Read this entire document carefully to ensure proper assembly before use. Failure to read and follow instructions and warnings in this document may result in serious injury to yourself or others, damage to your NOW Buckle, or damage to other objects in the vicinity. This document and all other collateral documents are subject to change at the sole discretion of NOW Snowboarding. For up-to-date product information, visit [www.now-snowboarding.com](http://www.now-snowboarding.com). By using this product, you hereby signify that you have read this disclaimer and warning carefully and that you understand and agree to abide by the terms and conditions herein. You agree that you are solely responsible for your own conduct while using this product, and for any consequences thereof. You agree to use this product only for purposes that are proper and in accordance with all applicable laws, rules, and regulations, and all terms, precautions, practices, policies and guidelines NOW Snowboarding has made and may make available. NOW Snowboarding accepts no liability for damage, injury or any legal responsibility incurred directly or indirectly from the use of this product. The user shall observe safe and lawful practices including, but not limited to, those set forth in this document.

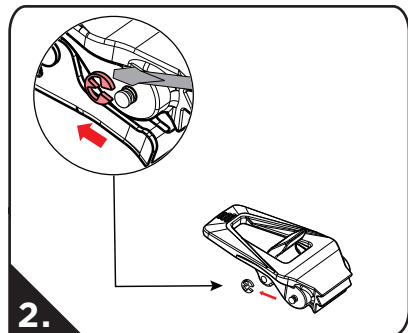


## DISASSEMBLY

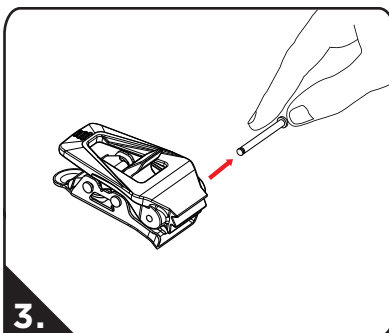
\*Small flat screwdriver is needed for buckle lever and spring change (not included)



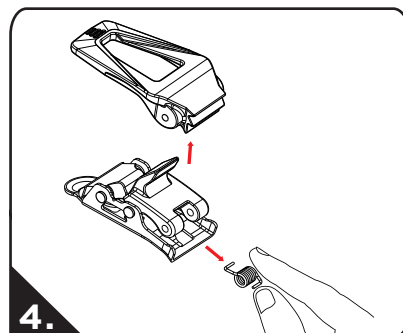
Removing buckle from strap is a must also please pay attention during the disassembly so you don't lose any small parts



Use flat head screwdriver to unclip and remove circlip of the axis (shown where the screwdriver should go for removal)

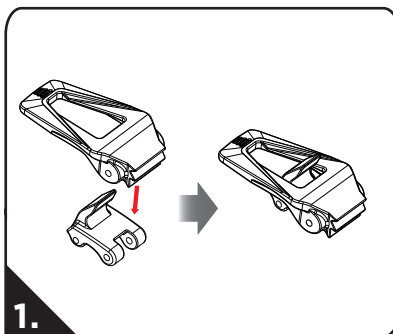


Pull the axis and remove it

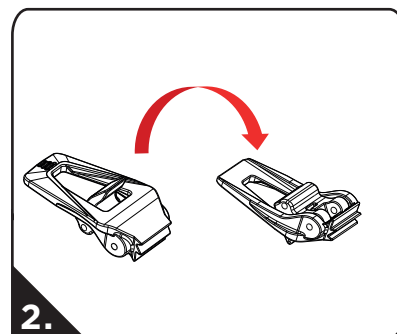


Remove lever and spring

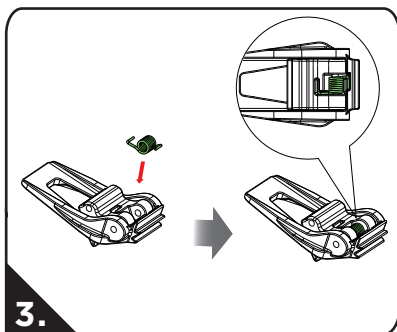
# ASSEMBLY



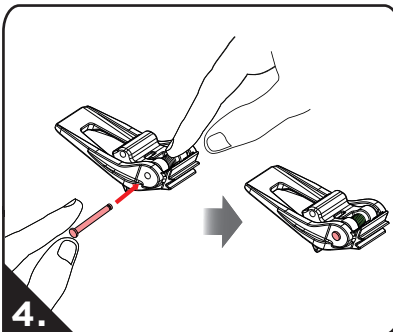
1. Line up lever with buckle release



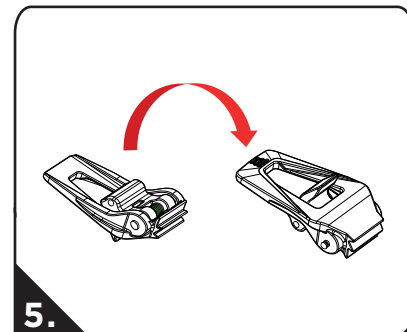
2. Flip buckle on its back and thread axis into lever and first part of buckle release



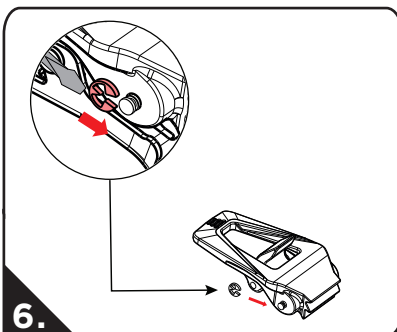
3. Inserts spring Note: look and make sure the spring is the right position before moving forward



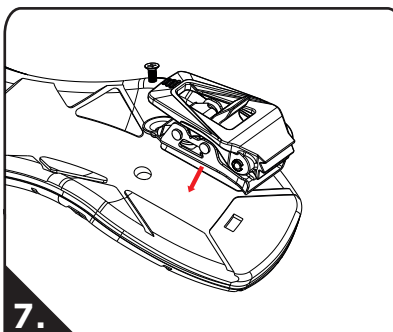
4. Push down on the spring and thread the axis through the buckle release and buckle lever



5. Flip buckle on its side while holding the axis from bottom



6. Mount circlip using small flat screwdriver to push it and click it into its place



7. Mount buckle on strap and go ride

Use QR code to watch in real time the disassembling and the assembling of the buckle



or visit the website  
[www.now-snowboarding.com](http://www.now-snowboarding.com)