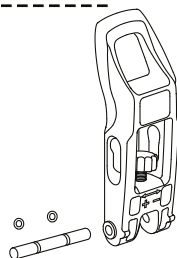
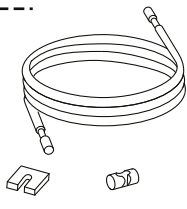


12-J1 Axis Snaplock Set
(= Snaplock +
Pin w/ clips 48A2)



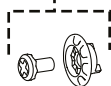
14-P1 Axis-series Cable Set
(= Cable + U-mount 27B1
+ Pin-Mount 27K1)



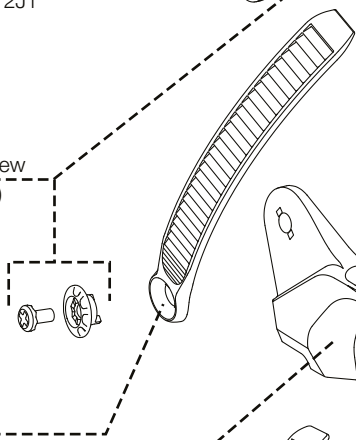
02-G2 Axis UniBack hiback Set
(= Hiback + Eva + Snaplock-Set 12J1
+ C-bolt-Set 28U2)



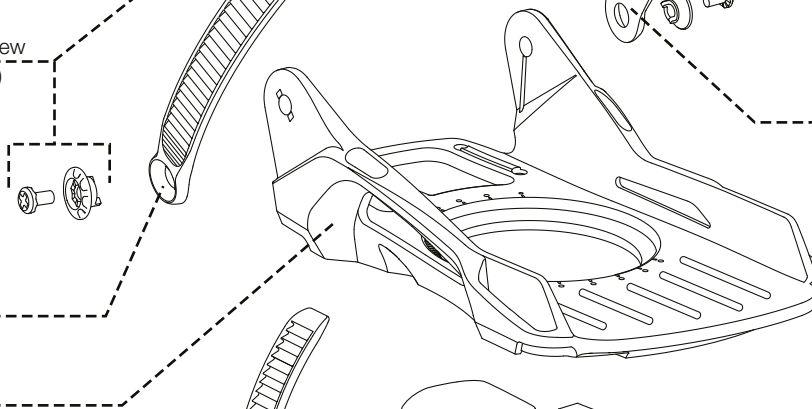
28-T2 Axis-NXS C-bolt Set (= Bolt + Screw
30B1 (M5*9) + Pivotwasher 19A1)



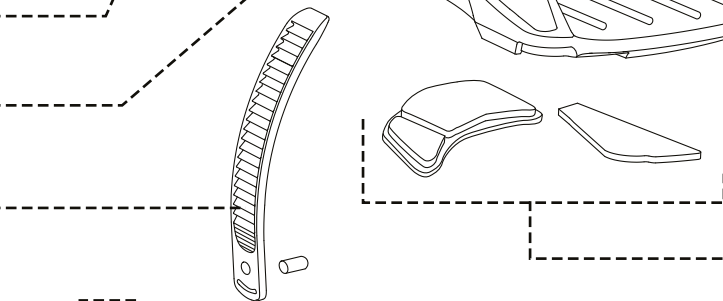
18-F1 LSR Pivot Ankle-ladder



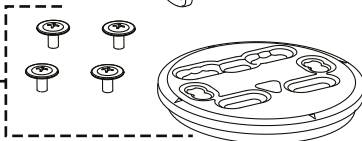
01-P1 Axis-Series NXS Baseplate



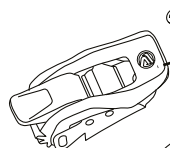
18-A1 LSR Toe-ladder w/ plug



21-H2 Multi-Disk Mounting Set (= Disk
+ Mount-Screws 42G1 (M6*14.5))

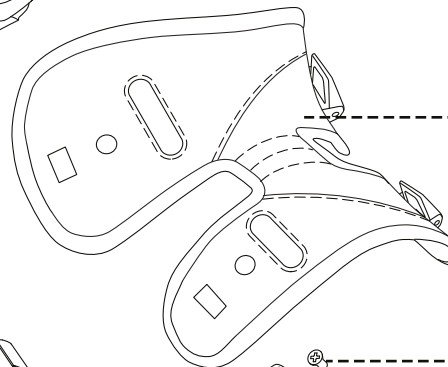


LSR Ankle-buckle w/ screw



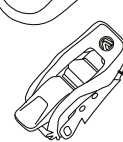
41-D2

Fusion PowerStrap set
w/ QS-Latches



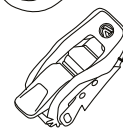
09-J2

Buckles mounting-screw (M5*6)



24-B1

LSR Toe-buckle w/ screw



41-E2

QuickSet Pivot Ankle-ladder



17-G1

QuickSet Toe-ladder w/ plug



17-D1

Ladder-strap pin/plug



20-A1

Axis-NXS Baseplate-Cushioning set
(= Heel-EVA + Rocker-EVA)

08-C1

12-J1 Axis Snaplock Set
(= Snaplock +
Pin w/ clips 48A2)

14-P1 Axis-series Cable Set
(= Cable + U-mount 27B1
+ Pin-Mount 27K1)

02-G2 Axis UniBack hiback Set
(= Hiback + Eva + Snaplock-Set 12J1
+ C-bolt-Set 28U2)

28-U2 Axis-FNX C-bolt Set (= T-Nut + Screw
30E1 (M5*12) + Pivotwasher 19C1)

18-G1 Axis LSR Ankle-Pivot-ladder

01-N1 Axis-Series FNX Baseplate

18-A1 LSR Toe-ladder w/ plug

21-H2 Multi-Disk Mounting Set (= Disk
+ Mount-Screws 42G1 (M6*14.5))

LSR Ankle-buckle w/ screw

41-D2

Fusion ExoFrame Set
(= ExoFrame + AnkleSpine
+ ToeSpine + QS-latches)

11-F1

LSR Toe-buckle w/ screw

41-E2

EXO Buckles mounting-screw (M5*9)

24-C1

Axis QuickSet Ankle-Pivot-ladder

17-K1

QuickSet Toe-ladder w/ plug

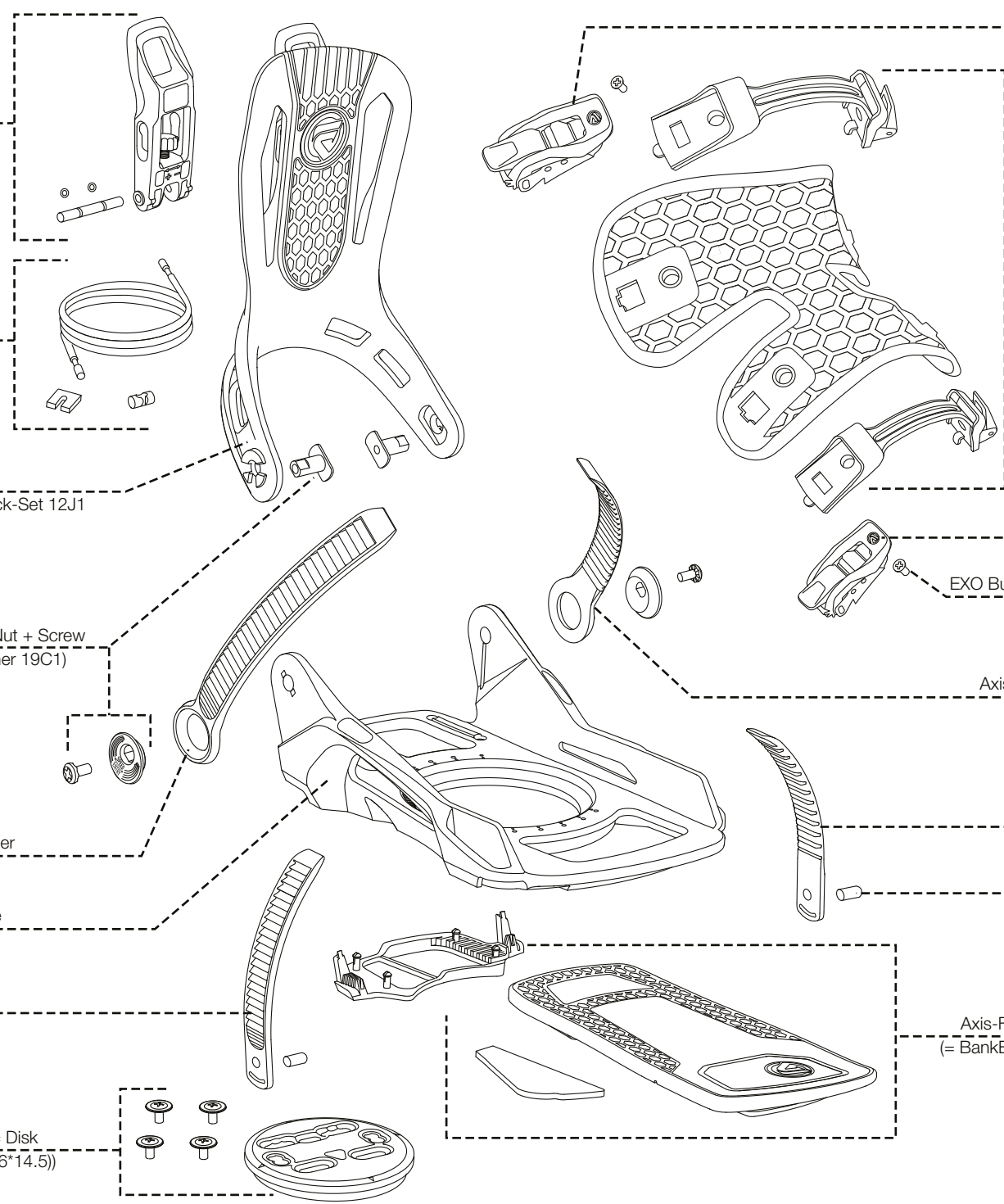
17-D1

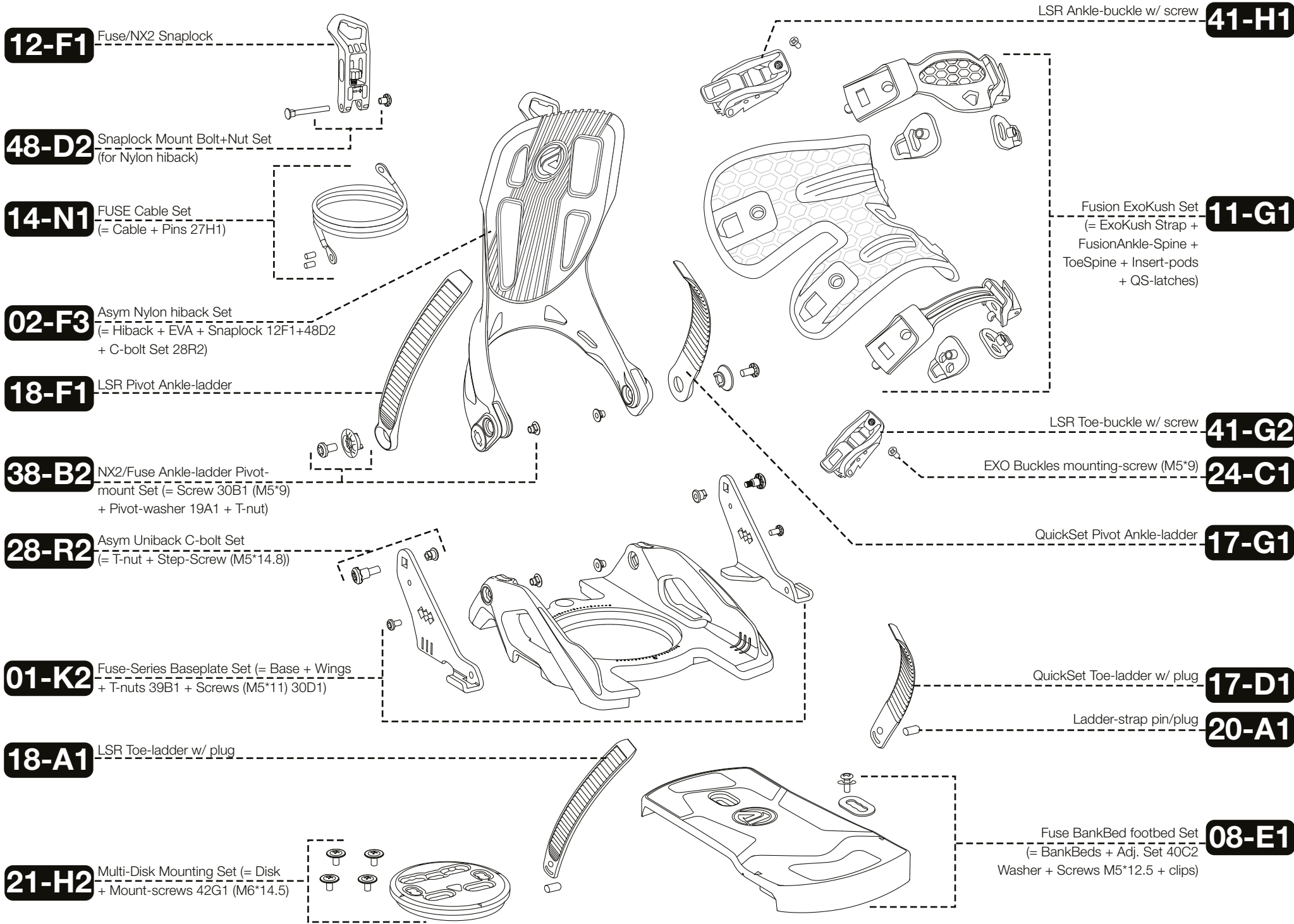
Ladder-strap pin/plug

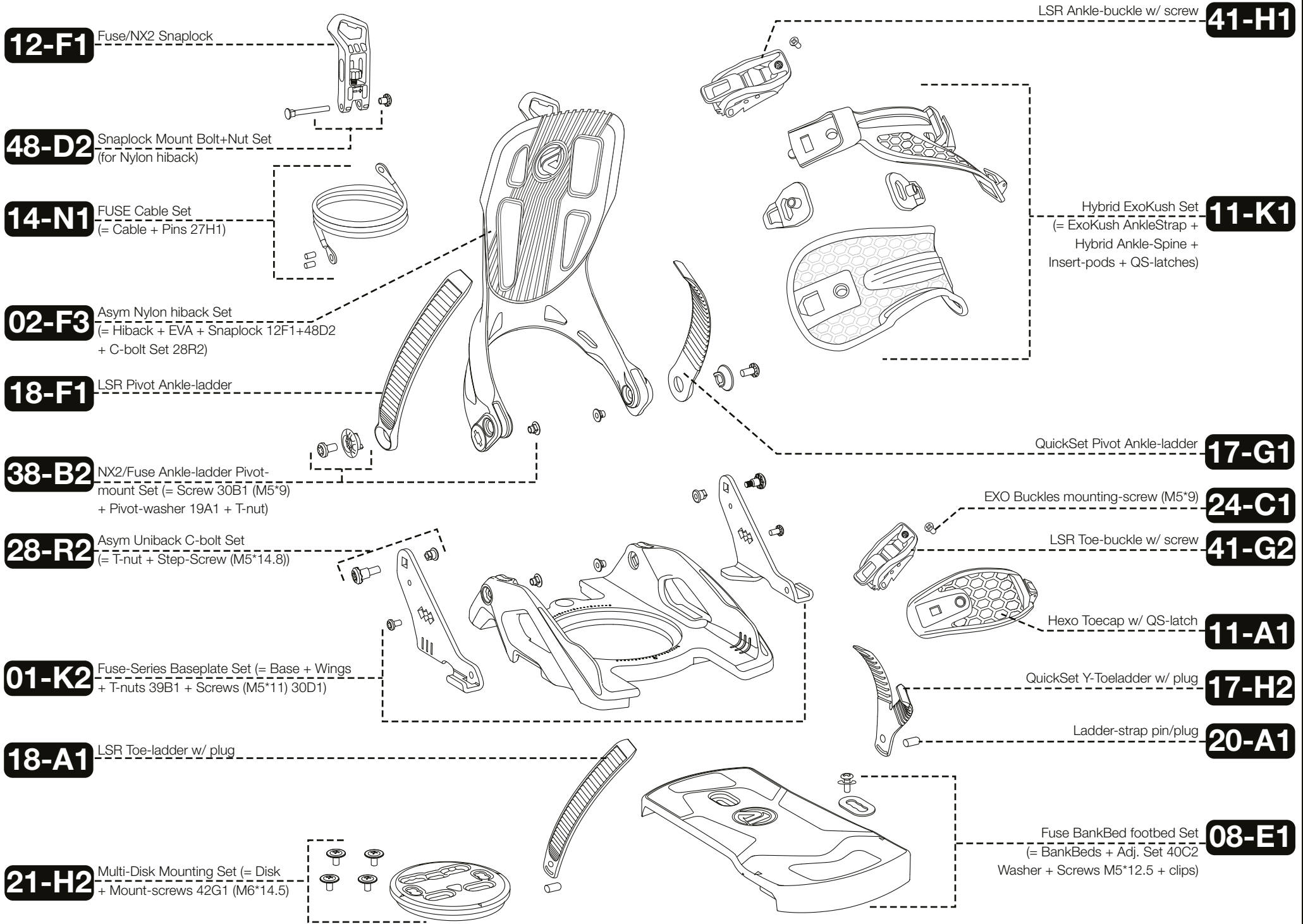
20-A1

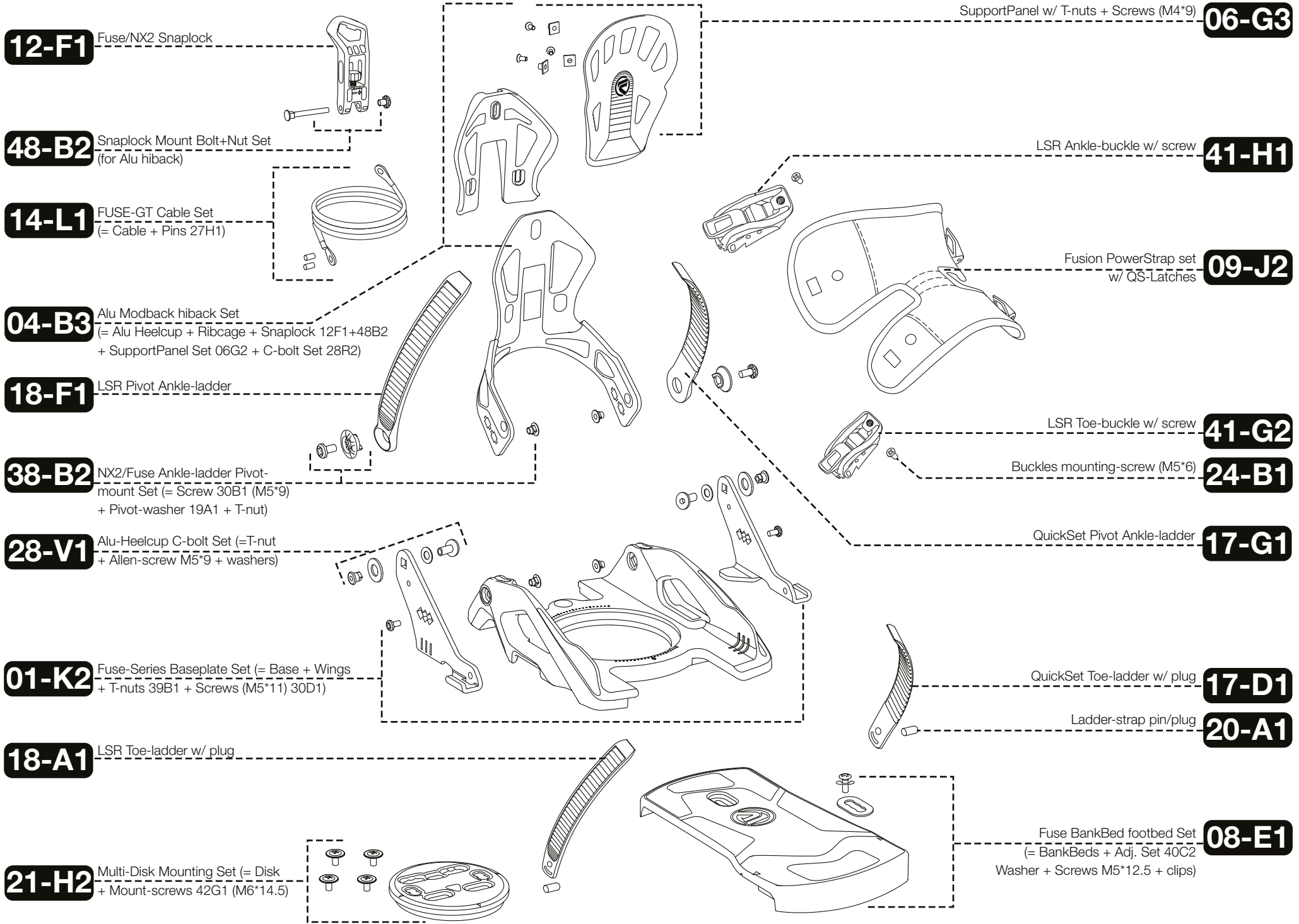
Axis-FNX Baseplate-Cushioning set
(= BankBed + HeelPad + Rocker-EVA)

08-D1

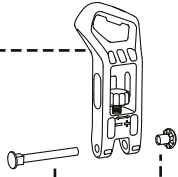






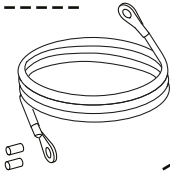


12-F1 Fuse/NX2 Snaplock



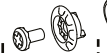
48-B2 Snaplock Mount Bolt+Nut Set
(for Alu hiback)

14-L1 FUSE-GT Cable Set
(= Cable + Pins 27H1)



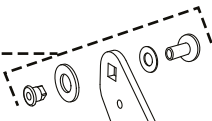
04-B3 Alu Modback hiback Set
(= Alu Heelcup + Ribcage + Snaplock 12F1+48B2
+ SupportPanel Set 06G2 + C-bolt Set 28R2)

18-F1 LSR Pivot Ankle-ladder



38-B2 NX2/Fuse Ankle-ladder Pivot-mount Set
(= Screw 30B1 (M5*9)
+ Pivot-washer 19A1 + T-nut)

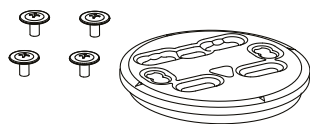
28-V1 Alu-Heelcup C-bolt Set (=T-nut
+ Allen-screw M5*9 + washers)



01-K2 Fuse-Series Baseplate Set (= Base + Wings
+ T-nuts 39B1 + Screws (M5*11) 30D1)

18-A1 LSR Toe-ladder w/ plug

21-H2 Multi-Disk Mounting Set (= Disk
+ Mount-screws 42G1 (M6*14.5))



SupportPanel w/ T-nuts + Screws (M4*9)

06-G3

LSR Ankle-buckle w/ screw

41-H1

Buckles mounting-screw (M5*6)

24-B1

Hybrid Ankle PowerStrap Set
w/ QS-Latches

09-K2

QuickSet Pivot Ankle-ladder

17-G1

EXO Buckles mounting-screw (M5*9)

24-C1

LSR Toe-buckle w/ screw

41-G2

Hexo Toecap w/ QS-latch

11-A1

QuickSet Y-Toeladder w/ plug

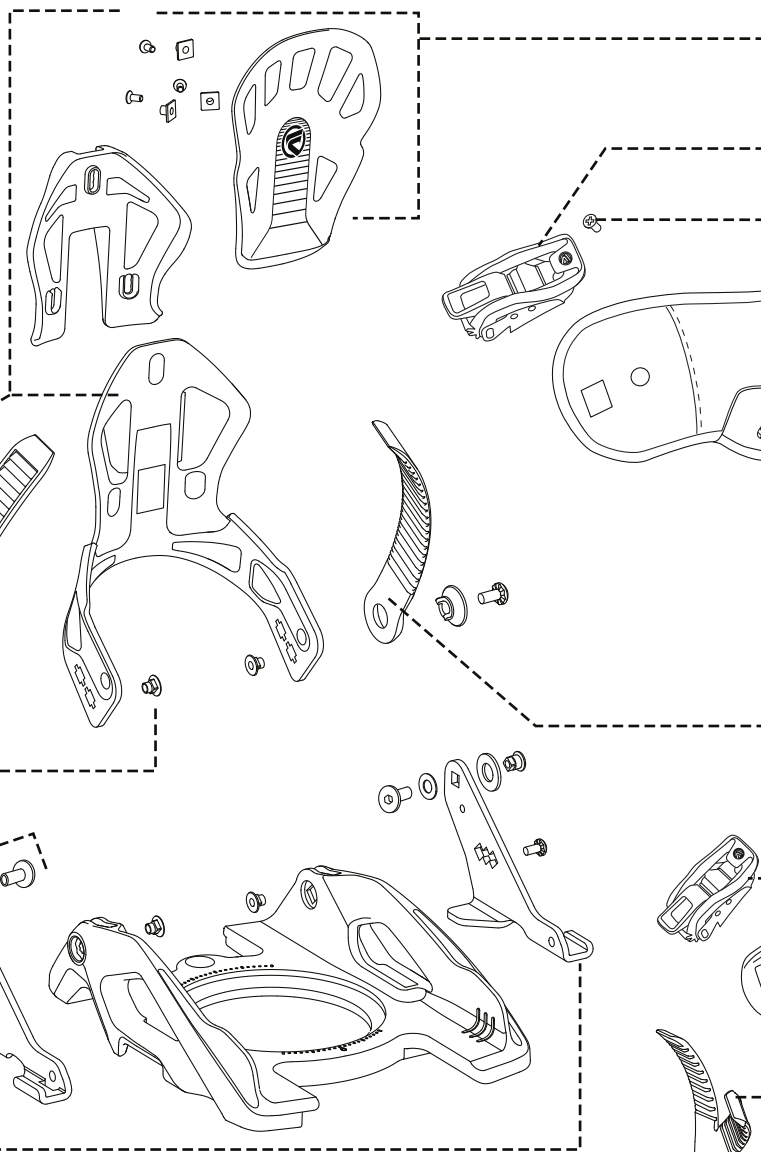
17-H2

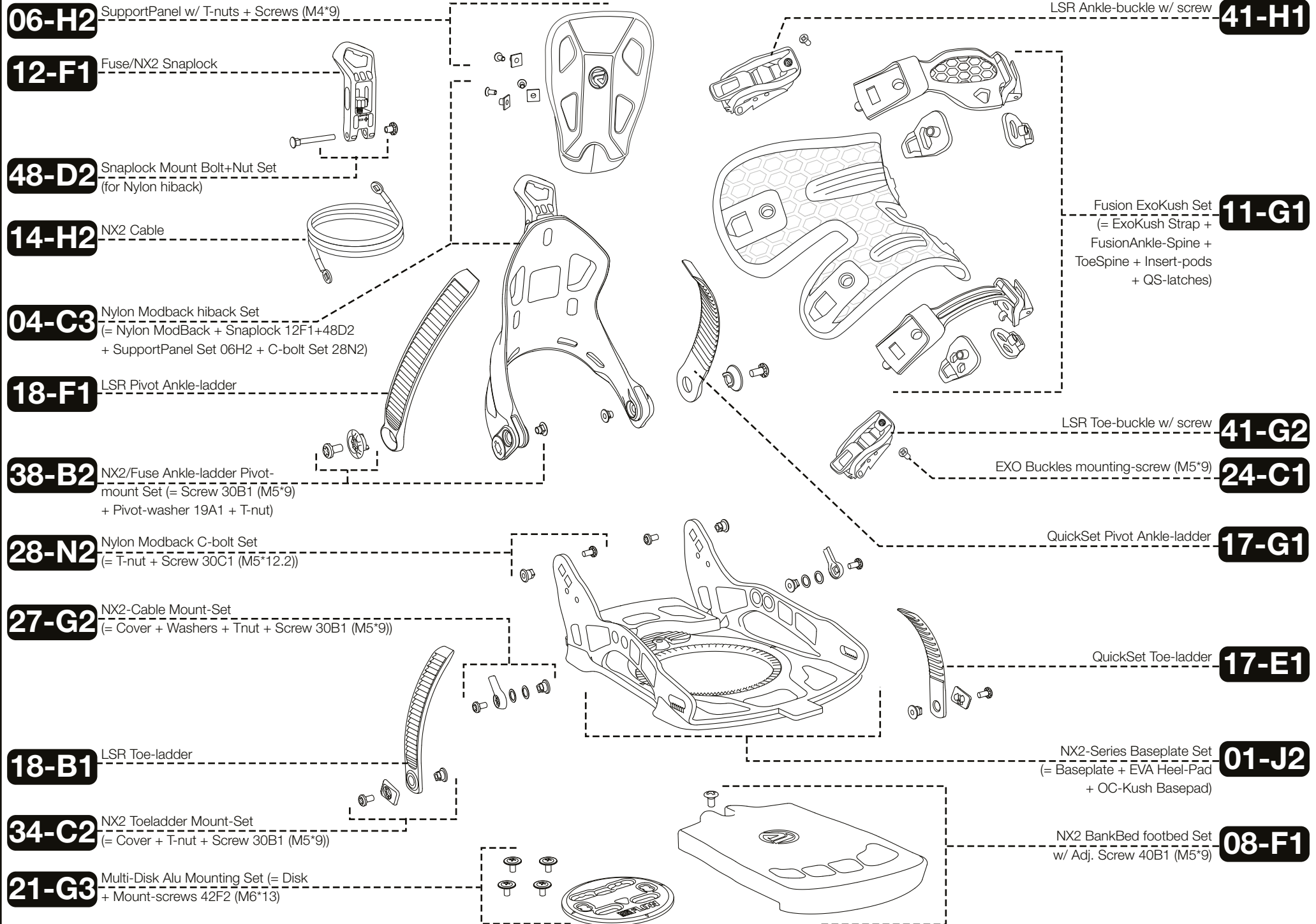
Ladder-strap pin/plug

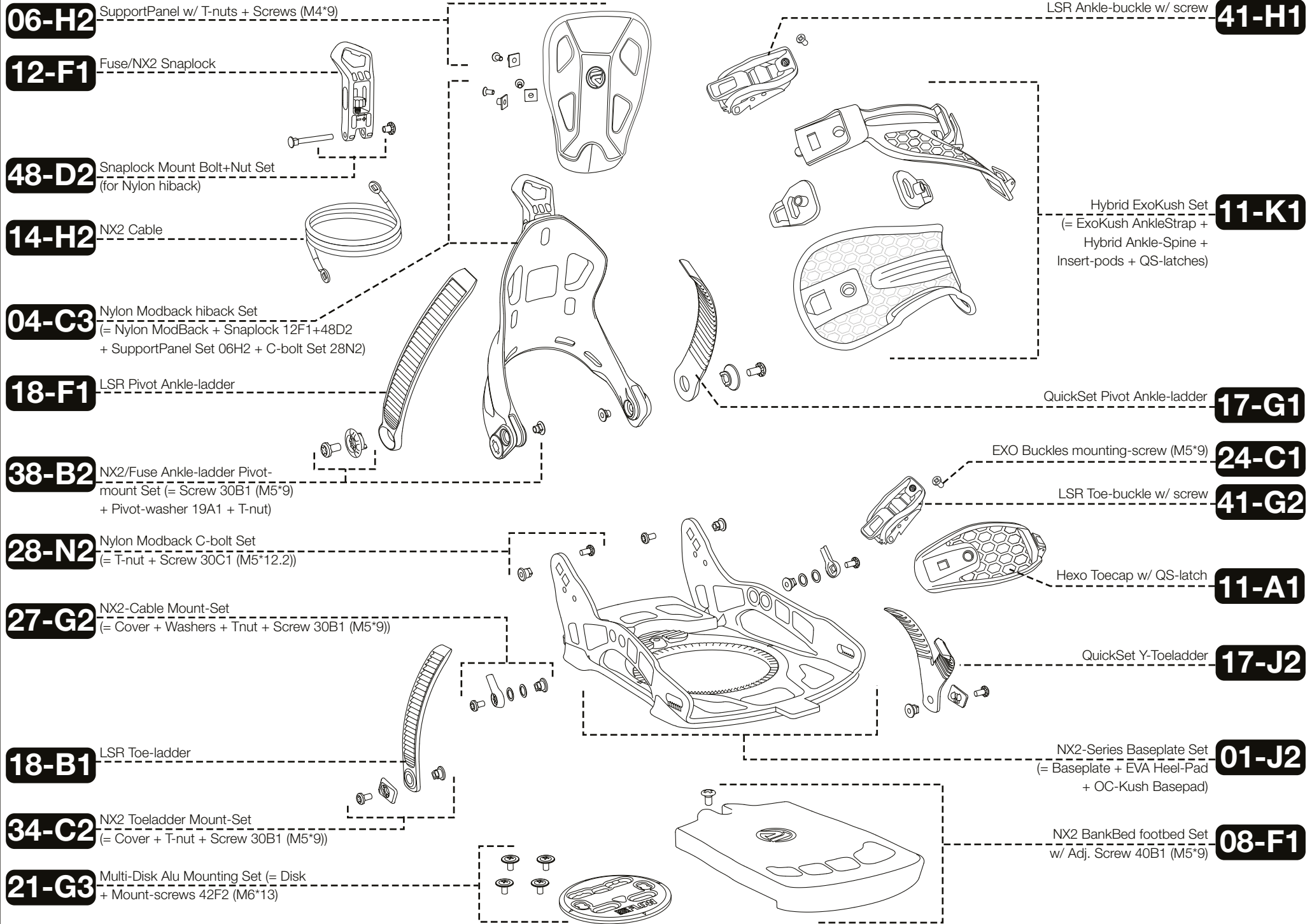
20-A1

Fuse BankBed footbed Set
(= BankBeds + Adj. Set 40C2
Washer + Screws M5*12.5 + clips)

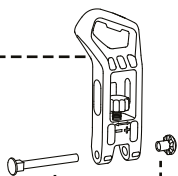
08-E1



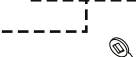




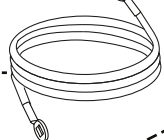
12-F1 Fuse/NX2 Snaplock



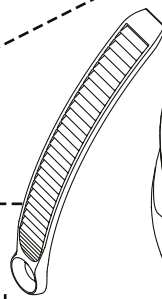
48-D2 Snaplock Mount Bolt+Nut Set
(for Nylon hiback)



14-O1 NX2-CX Cable



02-F4 Carbon Asym hiback Set
(= Hiback + EVA + Snaplock 12F1+48D2
+ C-bolt Set 28R2)



18-F1 LSR Pivot Ankle-ladder



38-B2 NX2/Fuse Ankle-ladder Pivot-mount Set (= Screw 30B1 (M5*9)
+ Pivot-washer 19A1 + T-nut)



28-R2 Asym Uniback C-bolt Set
(= T-nut + Step-Screw (M5*14.8))



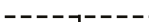
27-G2 NX2-Cable Mount-Set
(= Cover + Washers + Tnut + Screw 30B1 (M5*9))



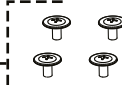
18-B1 LSR Toe-ladder



34-C2 NX2 Toeladder Mount-Set
(= Cover + T-nut + Screw 30B1 (M5*9))

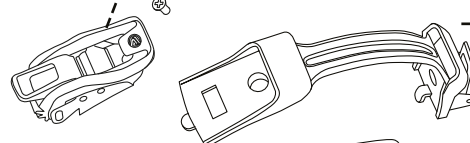


21-G3 Multi-Disk Alu Mounting Set (= Disk
+ Mount-screws 42F2 (M6*13))



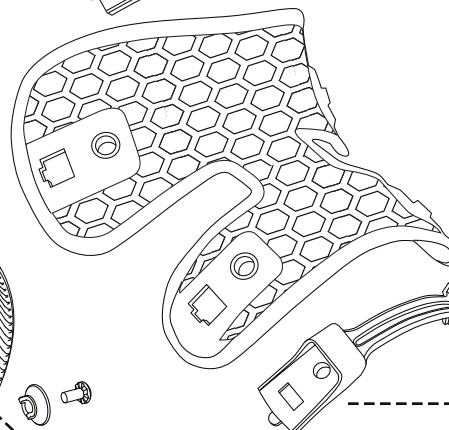
LSR Ankle-buckle w/ screw

41-H1



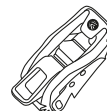
Fusion ExoFrame Set
(= ExoFrame + AnkleSpine
+ ToeSpine + QS-latches)

11-F1



LSR Toe-buckle w/ screw

41-G2



EXO Buckles mounting-screw (M5*9)

24-C1

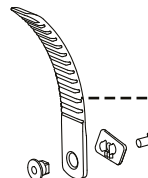
QuickSet Pivot Ankle-ladder

17-G1



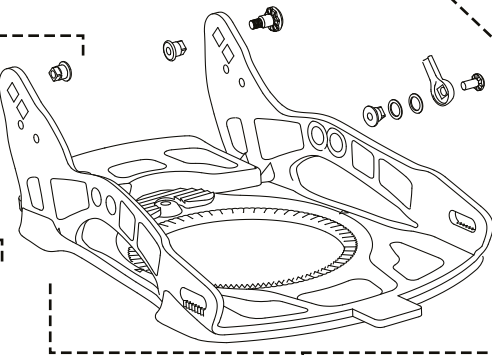
QuickSet Toe-ladder

17-E1



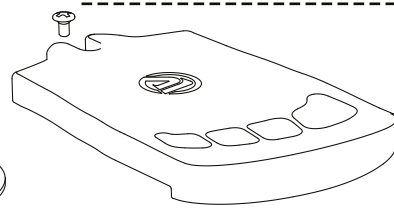
NX2-Series Baseplate Set
(= Baseplate + EVA Heel-Pad
+ OC-Kush Basepad)

01-J2

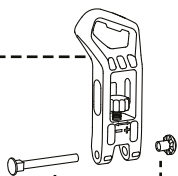


NX2 BankBed footbed Set
w/ Adj. Screw 40B1 (M5*9)

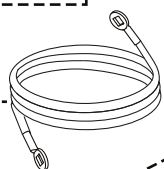
08-F1



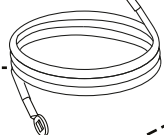
12-F1 Fuse/NX2 Snaplock



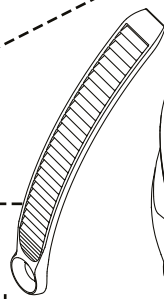
48-D2 Snaplock Mount Bolt+Nut Set
(for Nylon hiback)



14-O1 NX2-CX Cable



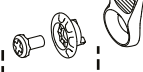
02-F4 Carbon Asym hiback Set
(= Hiback + EVA + Snaplock 12F1+48D2
+ C-bolt Set 28R2)



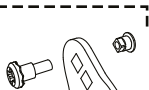
18-F1 LSR Pivot Ankle-ladder



38-B2 NX2/Fuse Ankle-ladder Pivot-mount Set (= Screw 30B1 (M5*9)
+ Pivot-washer 19A1 + T-nut)



28-R2 Asym Uniback C-bolt Set
(= T-nut + Step-Screw (M5*14.8))



27-G2 NX2-Cable Mount-Set
(= Cover + Washers + Tnut + Screw 30B1 (M5*9))



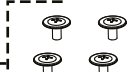
18-B1 LSR Toe-ladder



34-C2 NX2 Toeladder Mount-Set
(= Cover + T-nut + Screw 30B1 (M5*9))

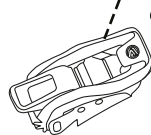


21-G3 Multi-Disk Alu Mounting Set (= Disk
+ Mount-screws 42F2 (M6*13))



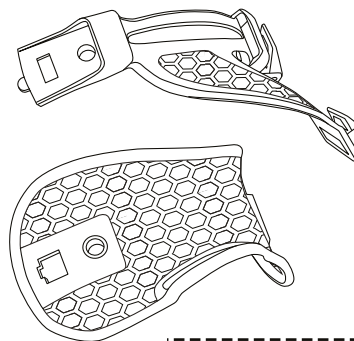
LSR Ankle-buckle w/ screw

41-H1



Hybrid ExoFrame Set
(= ExoFrame AnkleStrap +
Hybrid Ankle-Spine +
QS-latches)

11-H1



QuickSet Pivot Ankle-ladder

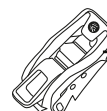
17-G1

EXO Buckles mounting-screw (M5*9)

24-C1

LSR Toe-buckle w/ screw

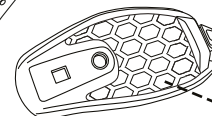
41-G2



LSR Toe-buckle w/ screw component

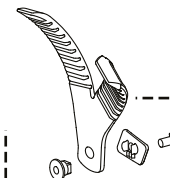
Hexo Toecap w/ QS-latch

11-A1



QuickSet Y-Toeladder

17-J2

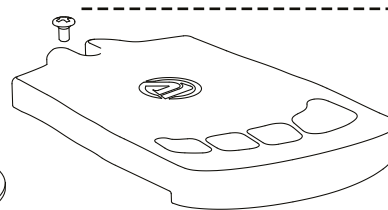


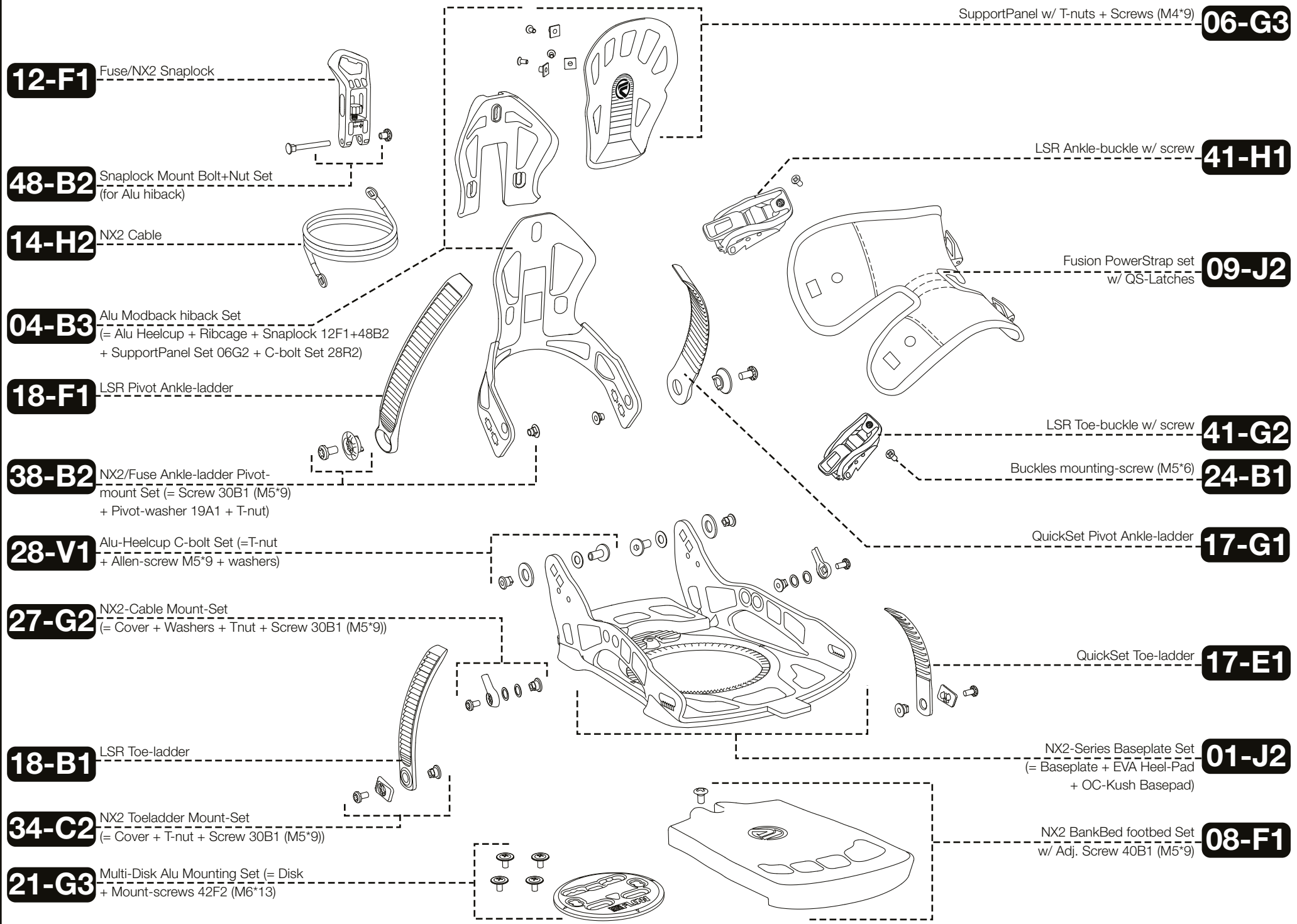
NX2-Series Baseplate Set
(= Baseplate + EVA Heel-Pad
+ OC-Kush Basepad)

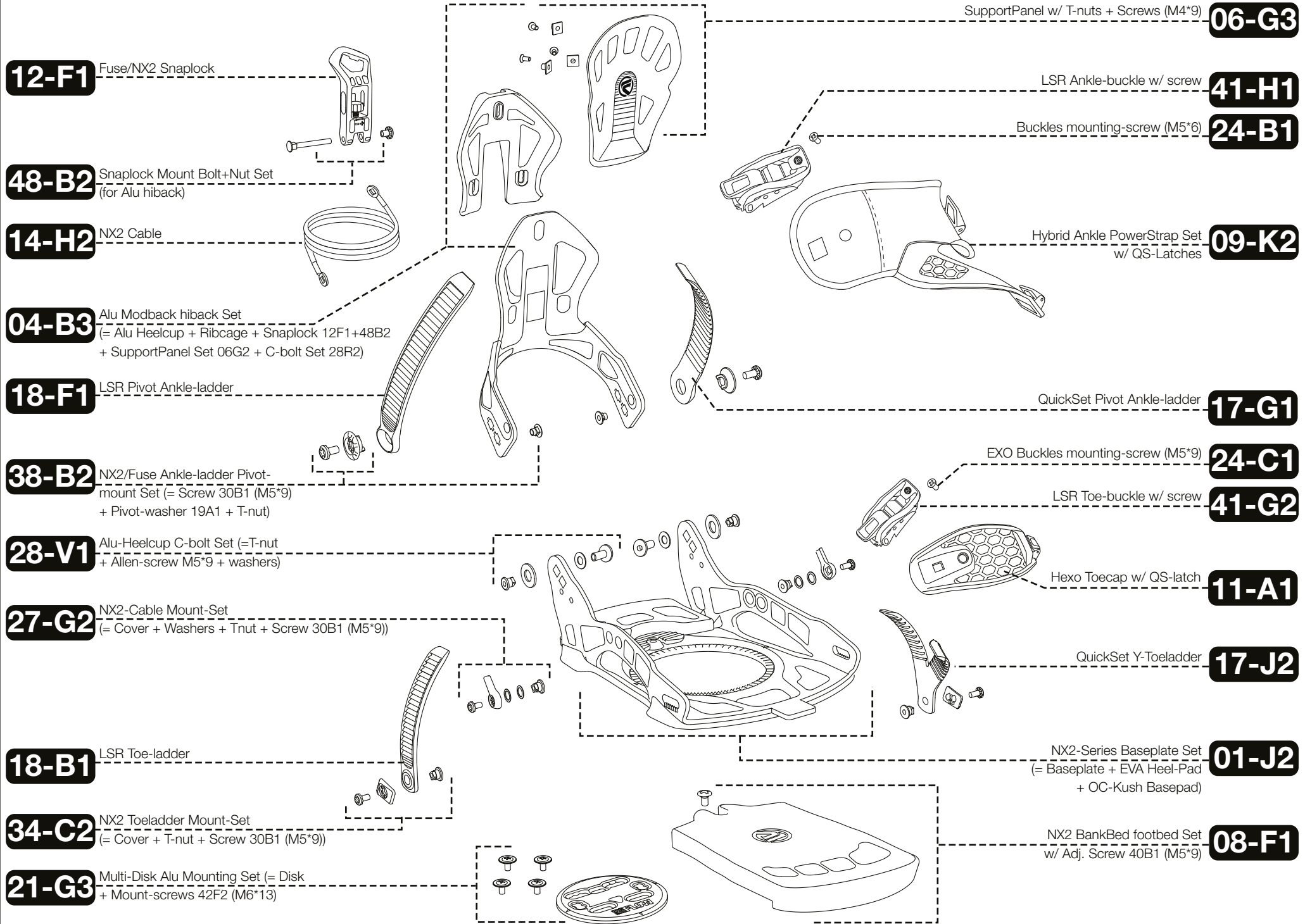
01-J2

NX2 BankBed footbed Set
w/ Adj. Screw 40B1 (M5*9)

08-F1







12-J1 Axis Snaplock Set
(= Snaplock +
Pin w/ clips 48A2)

14-P1 Axis-series Cable Set
(= Cable + U-mount 27B1
+ Pin-Mount 27K1)

02-G2 Axis UniBack hiback Set
(= Hiback + Eva + Snaplock-Set 12J1
+ C-bolt-Set 28U2)

28-T2 Axis-NXS C-bolt Set (= Bolt + Screw
30B1 (M5*9) + Pivotwasher 19A1)

18-F1 LSR Pivot Ankle-ladder

01-P1 Axis-Series NXS Baseplate

18-A1 LSR Toe-ladder w/ plug

21-H2 Multi-Disk Mounting Set (= Disk
+ Mount-Screws 42G1 (M6*14.5))

LSR Ankle-buckle w/ screw **41-D2**

Fusion ExoFrame Set **11-F1**
(= ExoFrame + AnkleSpine
+ ToeSpine + QS-latches)

LSR Toe-buckle w/ screw **41-E2**

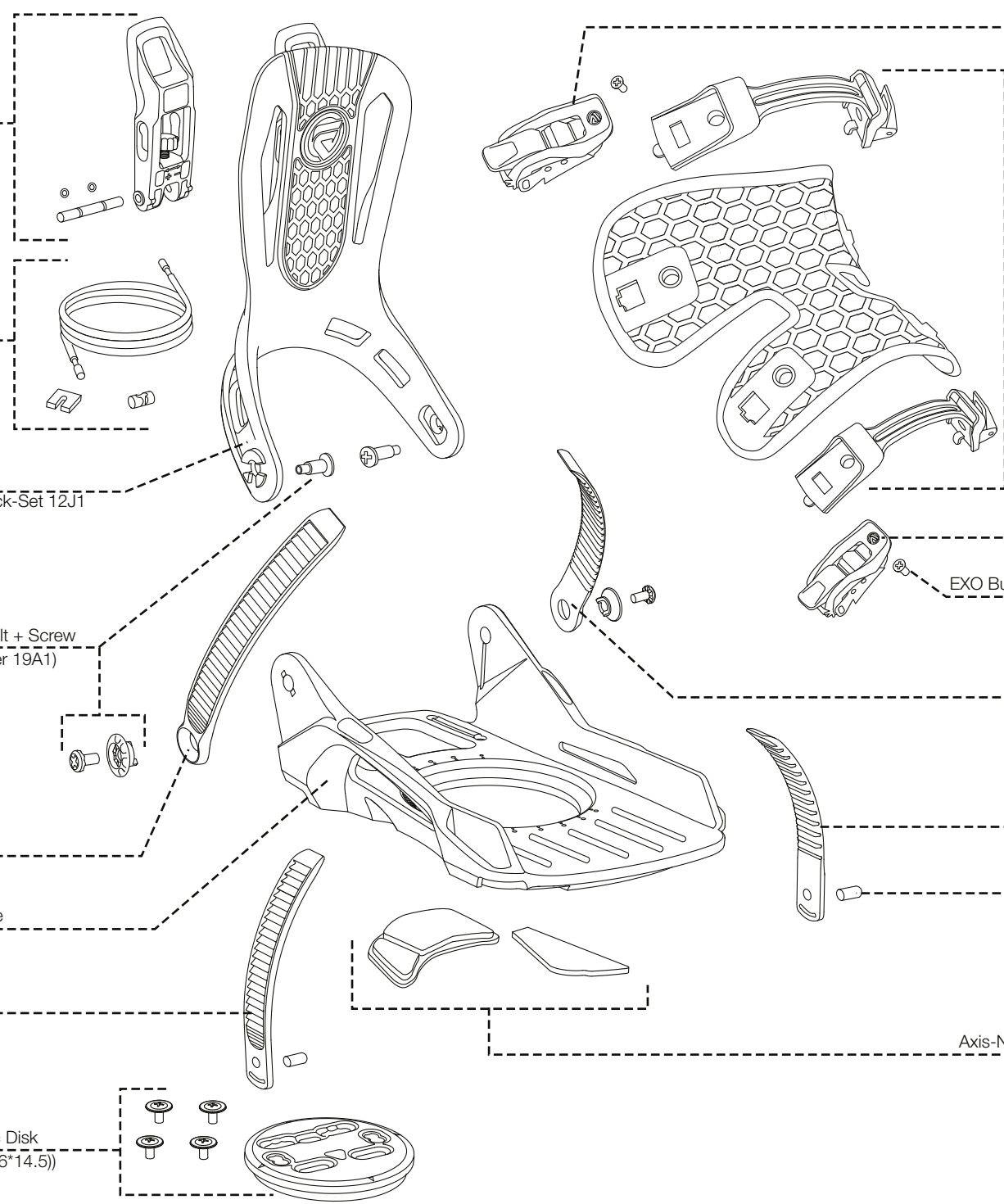
EXO Buckles mounting-screw (M5*9) **24-C1**

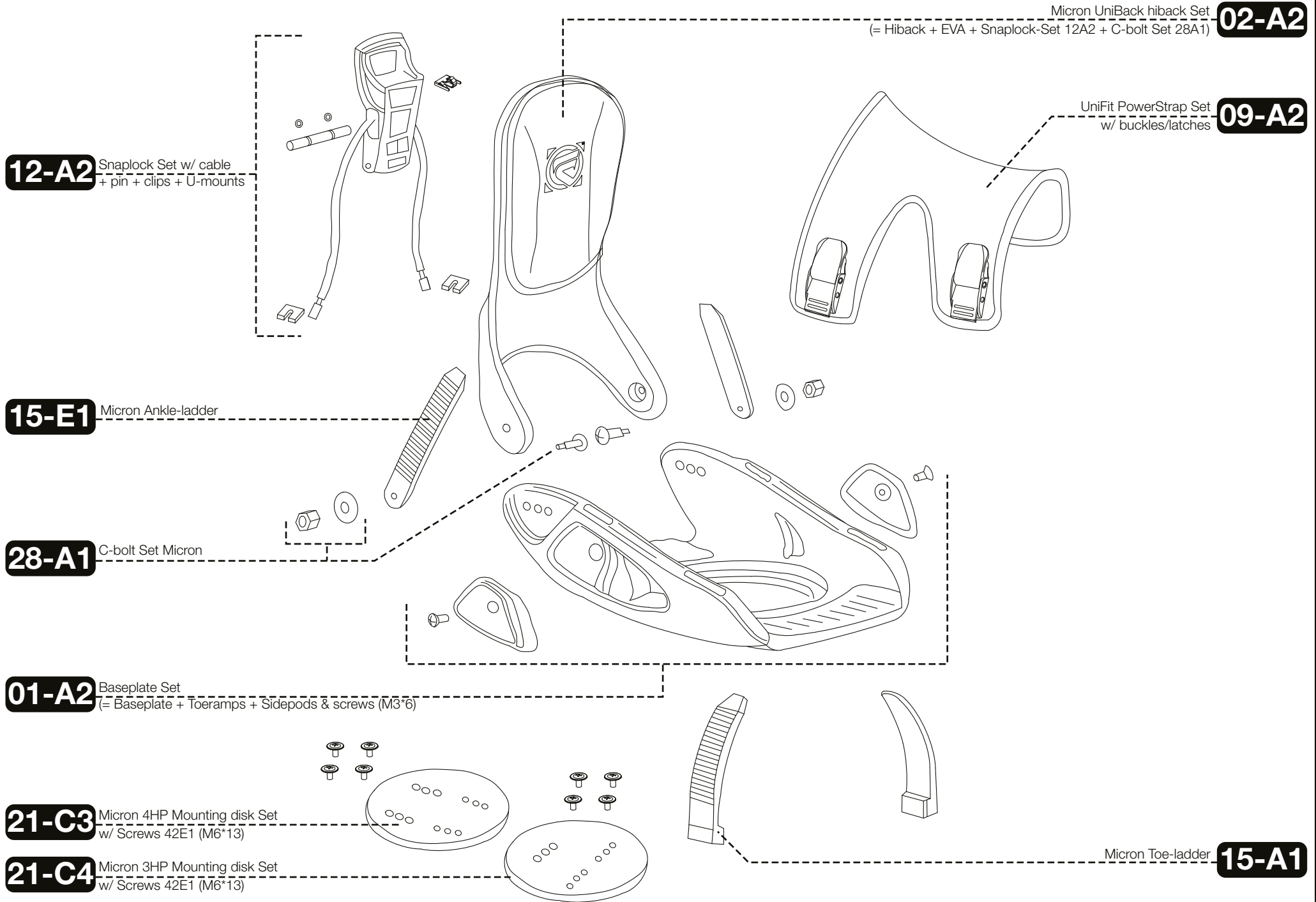
QuickSet Pivot Ankle-ladder **17-G1**

QuickSet Toe-ladder w/ plug **17-D1**

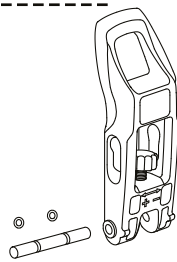
Ladder-strap pin/plug **20-A1**

Axis-NXS Baseplate-Cushioning set **08-C1**
(= Heel-EVA + Rocker-EVA)

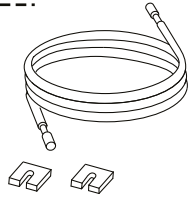




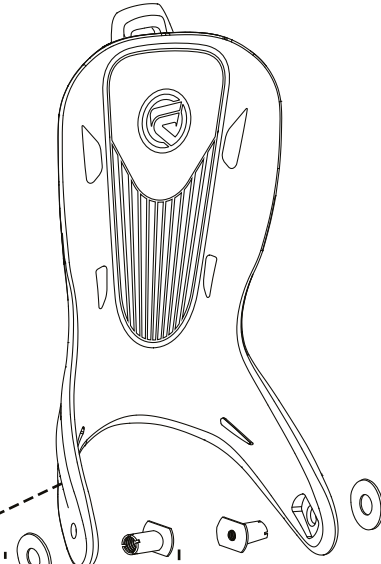
12-G1 H-POM Snaplock Set
(= Snaplock +
Pin w/ clips 48A2)



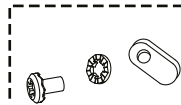
14-B2 H-series Cable Set
(= Cable + U-mount 27B1)



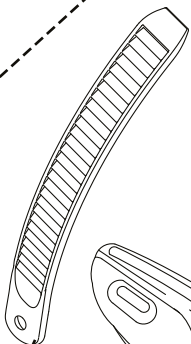
02-E7 H-Series UniBack POM hiback Set
(= Hiback + Eva + Snaplock-Set 12G1
+ C-bolt-Set 28C2)



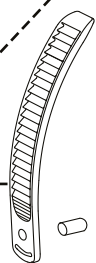
28-C2 H-Series C-bolt Set (= T-nut + Wavewasher
+ Screw 30A1 (M5*14) + Toothwasher 33A1
+ Spingwasher 31A1)



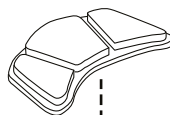
18-E1 LSR Ankle-ladder



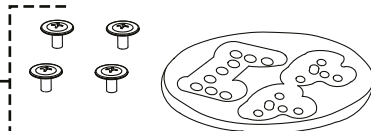
01-D4 H-Series Baseplate



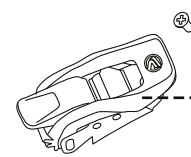
18-A1 LSR Toe-ladder w/ plug



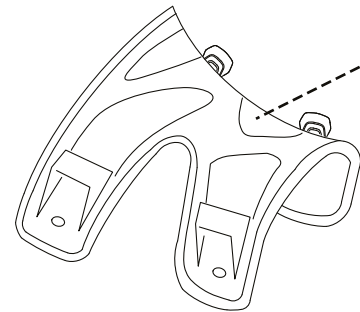
21-D2 Combi-Disk Mounting Set (= Disk
+ Mount-Screws 42A2 (M6*15))



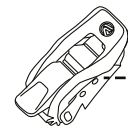
LSR Ankle-buckle w/ screw **41-D2**



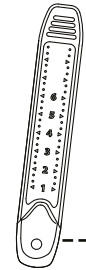
ExoFit PowerStrap w/ QS-latches **09-M3**



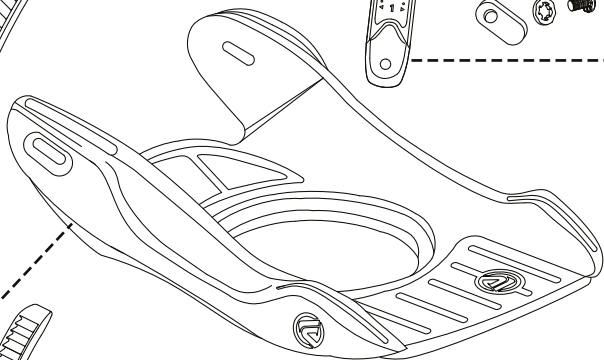
Buckles mounting-screw (M5*6) **24-B1**



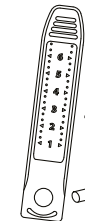
LSR Toe-buckle w/ screw **41-E2**



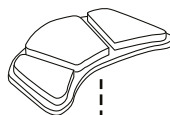
QuickSet Ankle-ladder **17-C1**



QuickSet Toe-ladder w/ plug **17-A1**



Ladder-strap pin/plug **20-A1**



H-Series Heel-pad EVA **07-E3**

