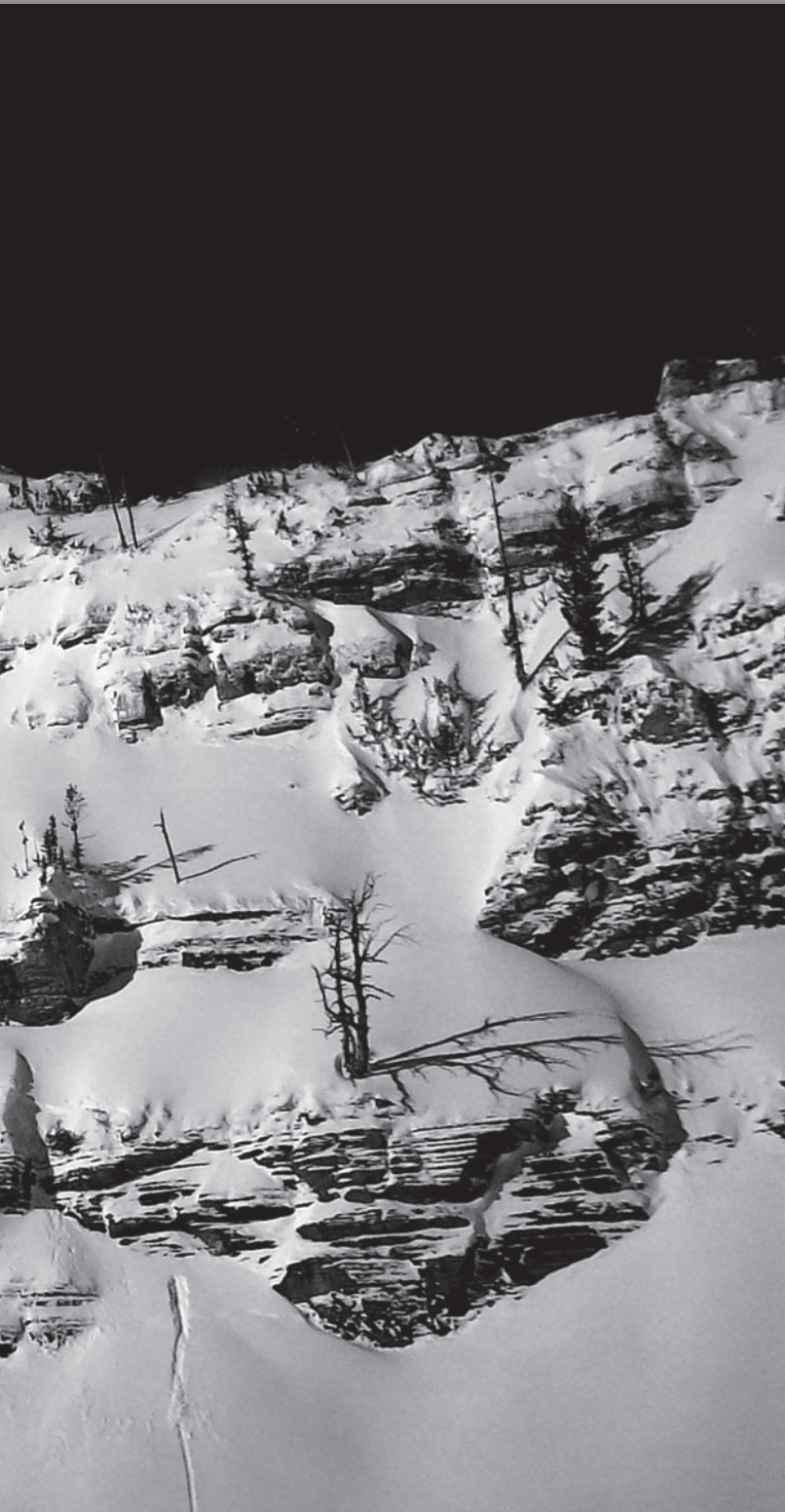


New Year's morning, Jeremy's track, Jackson Hole sidecountry. Photo Jeremy Jones.



There is nothing quite like the feeling of throttling a new snowboard to a level that you did not know existed. Once you taste the insane capabilities of a new board design under your boots there is no turning back. That progression becomes an obsession. When I started Jones Snowboards I was finally given the opportunity to unleash this potential - the potential to create a freeride quiver that not only reflected everything I had ever learned about design, but a board line-up both split and solid that pushed the boundaries of what was possible. From the Hovercraft splitboard to the new Mountain Twin, these are next level dream boards that I didn't fully comprehend until I strapped into them for the first time.

We have only begun our design revolution in freeride snowboarding. Where we are going will be dictated by the mountains and you - the riders. From the bottom of my heart I want to thank everyone for the support and trust you have given Jones Snowboards thus far. Your support has shown us that freeride snowboarding has taken a back seat in the industry for way too long. We all deserve the total commitment of energy and resources to the development of freeride and backcountry products. Jones Snowboards is dedicated for life to this progression. Thanks for taking these first steps with us. We will walk together and we will walk far.

Back to the mountains.....see you there!

Jeremy
Jones



THE FLAGSHIP



SOLID



THE FALL-LINE WEAPON

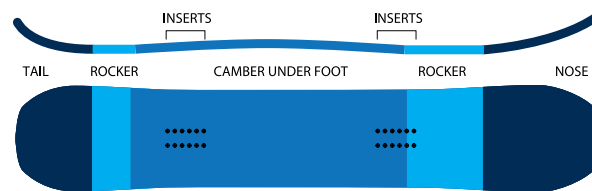
154(LS)(24.6ww), **158**(24.9ww), **161**(25.2ww)
164(25.4ww), **163W**(26.2ww), **168W**(26.2ww)

Ideal for Big-Mountain Free Riding and
 Fall-Line Freestyle

Big mountain freeriding demands both power and agility. The Flagship defines that balance and is the ultimate board for riders who want to shred like a rhino yet leap like a gazelle.

Jeremy Jones and his legion of podium proven freeriders have battle tested the Flagship for unmatched performance from the first jump turn to the last straight-line runout. Mellow Magne-traction keeps the Flagship solid on ice, while the blunt nose, directional rocker and camber underfoot deliver the float and stability necessary for bombing any line any time. The Flagship knows no speed limit and is no doubt one of the most confidence inspiring freeride snowboards ever produced. Step on it and prepare to step up.

Lightweight and lady rippers don't miss the new "L" series Flagship - a 154 cm rocket tuned especially for smaller riders.



DIRECTIONAL
ROCKER



BLUNT
NOSE



MELLOW
MAGNE-TRACTION



FSC
WOOD
CORE



FULL WOOD
CORE



FLIP FLOP
BASE



CARBON
STRINGERS



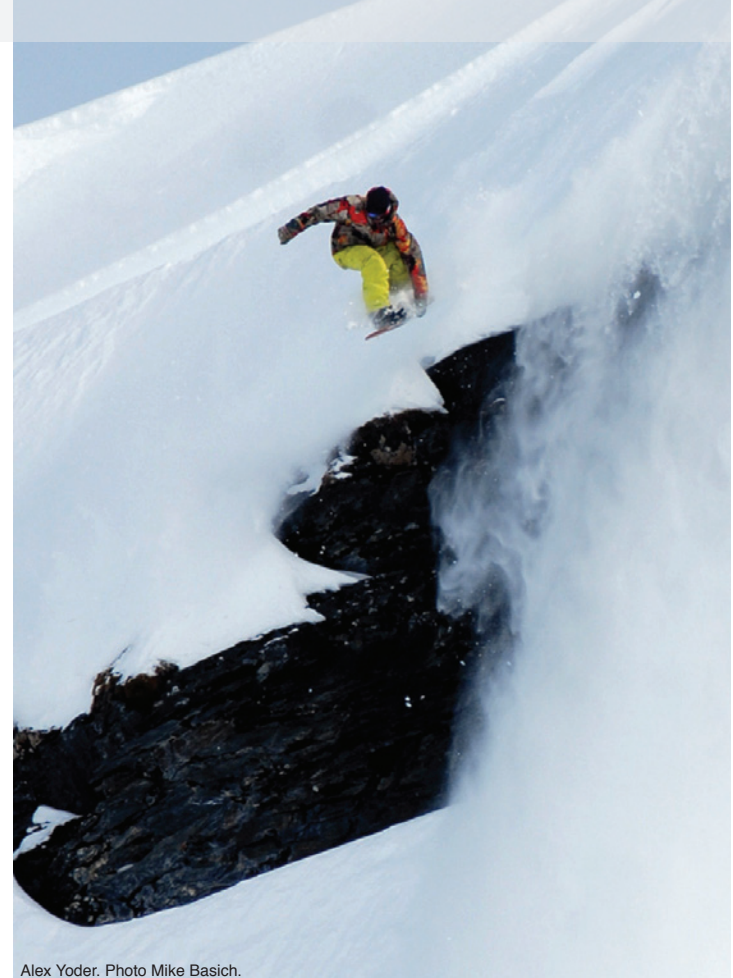
RECYCLED
BASE



SINTERED
BASE



WOOD
TOPSHEET



Alex Yoder. Photo Mike Basich.



Alex Yoder. Photo Mike Basich.



Ryland Bell



Jeremy Jones,
Nevada backcountry
Photo Pete O'Brien



Mitch Toelderer
finds Alaska in
his backyard,
the Austrian
Alps. Photo
Sepp Mallaun.

THE SOLUTION



SPLIT



THE PREMIER SPLITBOARD

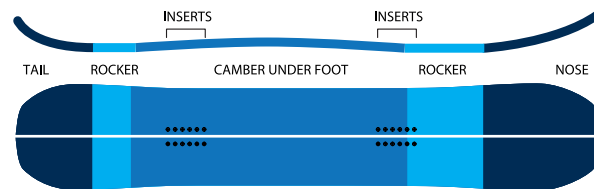
154(LS)(24.6ww), **158**(24.9ww), **161**(25.2ww)
164(25.4ww), **163W**(26.2ww), **168W**(26.2ww)

Ideal for Backcountry Freeriding and
 Wilderness Exploration

Like a beacon of light in the haze of the splitboard revolution, the Solution is the world's premier backcountry assault weapon. The pop, stability and float of this coveted all-terrain splitboard make fantasy a reality no matter where your alpine dreams may take you.

The Solution stands at the top of its class featuring inner and outer edge Magne-Traction and a directional rocker profile with traditional camber underfoot. Set back or centered, the Solution's resilient but forgiving flex pattern allows you to strap into the driver seat and put the pedal to the floor in any terrain - steep, deep or technical. If you question what's around every corner of every snowy mountain range the world over, there is only one answer for the splitboard you deserve. The Solution is the solution.

Lightweight and lady rippers don't miss the new "L" series Solution - a 154 cm splitboard tuned especially for smaller riders.



April 20th - Flying into the Fairweather Range, setting up camp, bivying on top of the line and waking up the next morning, walking ten feet and dropping into the best line off my life. A dream come true that would not have been possible without the Solution. No line is too far away anymore and the hard to reach mountain ranges are now in play.
 - Jeremy





THE MOUNTAIN TWIN



SOLID



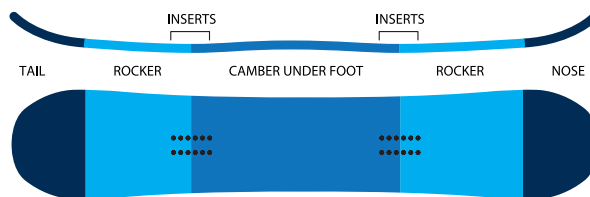
THE ALL MOUNTAIN FUN BOARD

151(LS)(24.9ww), **155**(25.2ww), **159**(25.5ww),
160W(26.0ww), **164W**(26.3ww),
159 SPLIT(25.5ww)

Ideal for Backcountry Freestyle and
 Resort Radness

Who says you can't have it all? The Mountain Twin rips terrain like a freestyle board with a freeride heart. From soft stashes to corduroy jump lines, the twin profile, directional flex Mountain Twin knows no boundaries.

When you feel like rallying the mountain like it's your own personal skate park, strap into the Mountain Twin. CAMROCK frees up the tip and tail offering extra float in soft snow while camber under foot combined with Mellow Magne-Traction give the Mountain Twin the snap and hold of a traditional board. We know progression doesn't stop at the resort so the Mountain Twin is also offered in a split-board for those that look to push their pillow popping skills into the backcountry.



SPLIT



Forrest Shearer has one of the most well rounded attacks in snowboarding. Bombing heavy lines, bouncing down pillows or hitting big gaps, its all the same for Forrest. Here he plays his chicken wing B/S 7 card. Wasatch Mountains, UT. Photo Erik Hostetler



Dave Short is the captain of the under rated snowboard club. He logs more airtime in a day then most people do in a season and we are proud to have him on our boards. Coast Mountains, BC
Photo Russel Dalby

THE HOVERCRAFT



SOLID



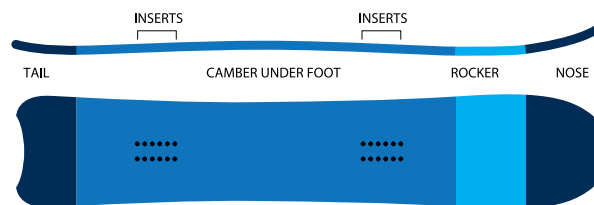
THE PERFECT POW BOARD

152(25.6ww), **156**(26ww), **160**(26.4ww),
156 SPLIT(26.0ww)

Ideal for Powder Hunting and Crud Busting

Packing the volume of an old-school long board into a nimble all-mountain charger, the Hovercraft is a phenomenon that shatters the stereotypes of your average “pow” board. Blower, crud or crust are no match for the Hovercraft as it floats through anything without sacrificing maneuverability in mixed conditions.

The blunt nose and directional rocker of the Hovercraft keep you partying in the pow while the stiff flat tail and Mellow Magne-Traction lock in stability when the fresh tracks are gone. Add all this up and there is a good reason why you’ll catch Jeremy Jones riding the Hovercraft on more days than not. The addition of the Hovercraft splitboard to the Jones line-up has cemented this board design to Jeremy’s feet. Nothing beats fresh tracks from first chair to the afternoon backcountry lap riding the same board you know and love.



DIRECTIONAL
ROCKER



BLUNT
NOSE



MELLOW
MAGNE-TRACTION



FSC
FSC WOOD
CORE



FULL WOOD
CORE



FILM
TOPSHEET

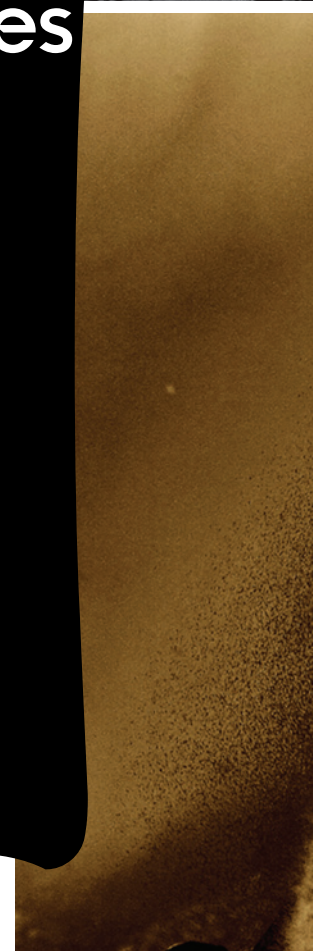


SINTERED
BASE



FLIP FLOP
BASE

SPLIT





Jeremy Jones feeling the sensations of a new turn after all these years. Photos Sedway.

BOARD FEATURES



DIRECTIONAL ROCKER

A hybrid rocker/camber flex pattern defined by more tip rocker than tail rocker and slight camber between the bindings. The rockered tip gives the nose added float and improves maneuverability while the camber underfoot gives you added edge hold and response. A slightly rockered tail maintains the power and stability of a traditional board but helps keep the tail catch-free initiating turns and landing switch.

"My experience is that most falls in freeriding start from the nose of the board – you either go over the bars in powder, the nose gets caught under a weird crust and tosses you, or you hit a hard tranny at the contact point of the tip and get bucked. Directional Rocker eliminates most of these falls. - Jeremy Jones



CAMROCK

The Mountain Twin features CAMROCK – a unique rocker/camber flex pattern defined by evenly balanced tip and tail rocker and slight camber between the bindings. CAMROCK improves freestyle finesse by keeping your tips playful while maintaining the power and pop of camber underfoot.



MELLOW MAGNE-TRACTION

Like a serrated knife slicing into the snow, Magne-Traction improves your edge grip by adding multiple contact points along the running length of your board. *"Magne-Traction is a key ingredient for rockered board designs. Adding rocker to your board makes it glide more smoothly, but it makes it harder to really lock into your turns and hold a solid edge. Magne-Traction is crucial to offset the drift typical of rocker flex patterns." - Jeremy Jones*



STRONGER EDGES

We added 35% more steel than a typical edge, what this achieves is a 250% increase in impact resistance compared to other edges offered on the market today.



ALU PROTECT

State of the art strength aluminum tip protectors. Elastomer is bonded to the aluminum to absorb vibrations.



L - SERIES

Lightweight and lady rippers don't miss the new "L" Series Flagship and "L" Series Solution - both 154cm rocket tuned boards especially for smaller riders.



BLUNT NOSE

"How a board glides in powder, crust, corn, or any snow condition more than an inch deep is dictated by its front contact point and just past it. Next time you are in soft snow watch how much snow comes over the corner of the nose near the contact point. The billowing snow means you are plowing through it which is obviously slowing you down. By adding a blunt nose you get the float benefits of a much longer board tip without the added length or swing weight." - Jeremy Jones



FSC WOOD CORE

The FSC wood cores come from forests that are managed to meet the social, economic and ecological needs of present and future generations.



CARBON STRINGERS

Carbon stringers are added to select models to improve pop and torsional stiffness and increase the longevity of the flex profile. This lightweight layer helps the board perform the same on day 100 as it did on day one - precise and playful.



SINTERED BASE

Fastest natural base material available. Durable, absorbs wax faster and retains wax longer. Our sintered base added with carbon nano particles as well as additives, creates a better glide. This base is specially developed by Nidecker, and is very resistant to impact.



FULL WOOD CORE

Full poplar and beech core gives the board more solid snap.



WOOD TOPSHEET

The Wood Topsheet on the Flagship dampens the ride for chatter-free performance. The natural material also eliminates some plastic and lacquer which cuts down on waste and weight.



FILM TOPSHEET

A thin piece of film replaces the traditional plastic topsheet. This eliminates plastic and reduces the weight of the board.



FLIP FLOP BASE

By flip flopping the base graphic colors, P-Tex waste is drastically reduced by increasing the material yield.



RECYCLED BASE

P-Tex scraps are recycled into new bases.



TRIAx FIBERGLASS

All Jones Snowboards include TRIAX Fiberglass, utilizing dual density fibers to strengthen high impact zones without adding weight or changing the overall flex of our boards.



STONE GROUND FINISH

All boards come with a Stone Ground Finish.



NIDECKER

All boards manufactured by Nidecker.



1% FOR THE PLANET

1% of sales are contributed to environmental groups around the world.



PROTECT OUR WINTERS

Protect Our Winters is the environmental center point of the winter sports community, united towards a common goal of reducing climate change's effects on our sport and local mountain communities.

BOARD SPECS

MODEL	FLAGSHIP						SOLUTION						MOUNTAIN TWIN						HOVERCRAFT				
SIZE (CM)	154	158	161	164	163W	168W	154	158	161	164	163W	168W	151	155	159	160W	164W	159 SPLIT	152	156	160	156 SPLIT	
NOSE LENGTH (MM)	250	250	250	250	255	265	250	250	250	250	250	265	215	215	215	215	220	215	280	280	280	280	
RUNNING LENGTH (MM)	1100	1140	1170	1210	1170	1210	1100	1140	1170	1210	1170	1210	1080	1120	1160	1160	1200	1160	1140	1180	1220	1180	
TAIL LENGTH (MM)	190	190	190	190	195	205	190	190	190	195	190	205	215	215	215	215	220	215	100	100	100	100	
NOSE WIDTH (MM)	287	290	292	296	301	304	287	290	292	301	292	304	294	297	301	305	309	301	301	304	308	304	
WAIST WIDTH (CM)	24.6	24.9	25.2	25.4	26.2	26.2	24.6	24.9	25.2	25.4	26.2	26.2	24.9	25.2	25.5	26.0	26.3	25.5	25.6	26.0	26.4	26.0	
WAIST WIDTH (IN)	9.7	9.8	9.9	10.0	10.3	10.3	9.7	9.8	9.9	10.3	9.9	10.3	9.8	9.9	10.0	10.2	10.2	10.0	10.2	10.2	10.3	10.2	
TAIL WIDTH (MM)	286	288	290	294	300	302	286	288	290	300	290	302	294	297	301	305	309	301	290	293	297	293	
SIDECUT RADIUS	7.9	8.5	9.1	9.3	9.3	9.3	7.9	8.5	9.1	9.3	9.1	9.3	6.9	7.3	7.7	7.9	8.3	7.7	8.9	9.3	9.5	9.3	
MIN - MAX STANCE (CM)	47-59	49-61	49-61	49-61	49-61	49-61	47 - 59	49 - 61	49 - 61	49 - 61	49 - 61	49 - 61	47 - 59	49 - 61	49 - 61	49 - 61	49 - 61	49 - 61	47 - 59	49 - 61	49 - 61	49 - 61	
MIN - MAX STANCE (IN)	18.5 - 23.2	19.5 - 24.2	19.5 - 24.2	19.5 - 24.2	19.5 - 24.2	19.5 - 24.2	18.5 - 23.2	19.5 - 24.2	19.5 - 24.2	19.5 - 24.2	19.5 - 24.2	19.5 - 24.2	18.5 - 23.2	18.5 - 23.2	19.5 - 24.2	19.5 - 24.2	19.5 - 24.2	19.5 - 24.2	18.5 - 23.2	19.5 - 24.2	19.5 - 24.2	19.5 - 24.2	
SETBACK (CM)	20	20	20	20	20	25	20	20	20	20	20	25	0	0	0	0	0	0	20	20	20	20	
EFFECTIVE EDGE(MM)	580	580	580	600	600	600	580	580	580	600	600	600	560	560	560	600	600	580	560	600	600	600	
EFFECTIVE EDGE (IN)	22.8	22.8	22.8	23.6	23.6	23.6	22.8	22.8	22.8	23.6	23.6	23.6	22.0	22.0	22.8	23.6	23.6	22.8	22.0	23.6	23.6	23.6	
INSERTS	6x2	6x2	6x2	6x2	6x2	6x2	6x2	6x2	6x2	6x2	6x2	6x2	6x2	6x2	6x2	6x2	6x2	6x2	6x2	6x2	6x2	6x2	
RIDER'S WEIGHT (KGS)	50 - 80	50-80	60-90	65-100	65-100	70+	50 - 80	50-80	60-90	65-100	65-100	70+	50 - 80	50 - 80	60-90	70-100	70-100	60-90	70-100	65+	70-100	65+	
RIDER'S WEIGHT (LBS)	110 - 176	110 - 176	132 - 198	143 - 220	143 - 220	150+	110 - 176	110 - 176	132 - 198	143 - 220	143 - 220	150+	110 - 176	110 - 176	132 - 198	150 - 220	150 - 220	132 - 220	150 - 220	143+	150 - 220	143+	
TECH	MAGNETRACTION 3x	MAGNETRACTION 3x	MAGNETRACTION 3x		MAGNETRACTION 3x	MAGNETRACTION 3x	MAGNETRACTION 3x	MAGNETRACTION 3x	MAGNETRACTION 3x	MAGNETRACTION 3x	MAGNETRACTION 3x	MAGNETRACTION 3x	MAGNETRACTION 5x	MAGNETRACTION 5x	MAGNETRACTION 3x	MAGNETRACTION 5x	MAGNETRACTION 5x	MAGNETRACTION 5x	MAGNETRACTION 3x	MAGNETRACTION 3x	MAGNETRACTION 3x	MAGNETRACTION 3x	
MAT	CARBON KEVLAR	CARBON KEVLAR	CARBON KEVLAR	MAGNETRACTION 3x	CARBON KEVLAR	CARBON KEVLAR	CARBON KEVLAR	CARBON KEVLAR	CARBON KEVLAR	CARBON KEVLAR	CARBON KEVLAR	CARBON KEVLAR	CARBON KEVLAR	CARBON KEVLAR	CARBON KEVLAR	CARBON KEVLAR	CARBON KEVLAR	CARBON KEVLAR					
ROCKER	DIRECTIONAL ROCKER	DIRECTIONAL ROCKER	DIRECTIONAL ROCKER	CARBON KEVLAR	DIRECTIONAL ROCKER	DIRECTIONAL ROCKER	DIRECTIONAL ROCKER	DIRECTIONAL ROCKER	DIRECTIONAL ROCKER	DIRECTIONAL ROCKER	DIRECTIONAL ROCKER	DIRECTIONAL ROCKER	CAMPOCK	CAMPOCK	CAMPOCK	CAMPOCK	CAMPOCK	CAMPOCK	DIRECTIONAL ROCKER	DIRECTIONAL ROCKER	DIRECTIONAL ROCKER	DIRECTIONAL ROCKER	
FLEX	DIRECTIONAL FR	DIRECTIONAL FR	DIRECTIONAL FR	DIRECTIONAL ROCKER	DIRECTIONAL FR	DIRECTIONAL FR	DIRECTIONAL FR	DIRECTIONAL FR	DIRECTIONAL FR	DIRECTIONAL FR	DIRECTIONAL FR	DIRECTIONAL FR	DIRECTIONAL FB	DIRECTIONAL FB	DIRECTIONAL FB	DIRECTIONAL FB	DIRECTIONAL FB	DIRECTIONAL FB	DIRECTIONAL FR	DIRECTIONAL FR	DIRECTIONAL FR	DIRECTIONAL FR	

FLAGSHIP	SOLUTION	MOUNTAIN TWIN	MOUNTAIN TWIN SPLIT	HOVERCRAFT	HOVERCRAFT SPLIT	FLAGSHIP L-SERIES	SOLUTION L-SERIES
							
154cm (LS) 24.6ww 158cm 24.9ww 161cm 25.2ww 164cm 25.4ww 163Wcm 26.2ww 168Wcm 26.2ww	154cm (LS) 24.6ww 158cm 24.9ww 161cm 25.2ww 164cm 25.4ww 163Wcm 26.2ww 168Wcm 26.2ww	151cm (LS) 24.9ww 155cm 25.2ww 159cm 25.5ww 160Wcm 26.0ww 164Wcm 26.3ww	159cm 25.5ww	152cm (LS) 25.6ww 156cm 26.0ww 160cm 26.4ww	156cm 26.0ww	154cm (LS) 24.6ww	154cm (LS) 24.6ww

JONES CLOTHING

FLAGSHIP TEE



Natural Moss
Gray Navy

MTN TWIN TEE



Red Gray
Blue

HOVERCRAFT TEE



Black
Dark Red

LOGO TEE

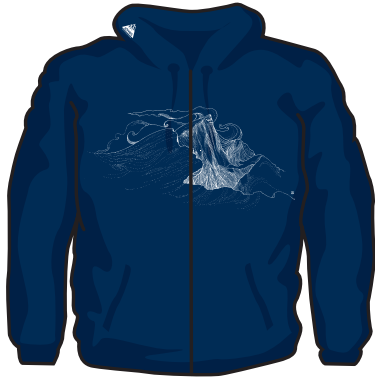


Blue Gray
Natural

POW TEE



Natural
Gray



FLAGSHIP ZIP HOODY

Navy
Brown



HOVERCRAFT ZIP HOODY

Dark Red



LOGO TRUCKER HAT

Navy



HOVERCRAFT TRUCKER HAT

Black



LOGO ZIP HOODY

Navy



FLAGSHIP TRUCKER HAT

Black



Jeremy Jones - USA
Height: 5'8"
Weight: 150 lbs
Stance: 21.5°, 24° front, 0° back
Foot size: 7.5 US
Home Mountain Range:
Sierra Nevada
Resort: Squaw Valley
Boards: Flagship 161, Solution
161, Hovercraft 56,
Mtn Twin 159, Hovercraft Split



Mitch Toelderer - Austria
Height: 181.5 m
Weight: 75 kg
Foot size: 43, 10 US
Stance: Goofy
Home Mountain Range:
The 'Karwendel'
in the Austrian Alps
Boards: Flagship 164
Solution 164



Luca Pandolfi - Italy
Height: 6'2"
Weight: 185 lbs
Foot size: 11.5 US
Stance: Regular
Home Mountain Range:
Chamonix Mont Blanc
Resort: Courmayeur
Boards: Flagship 168,
Solution 168

TEAM



Dave Short - Canada
Height: 6'0"
Weight: 180 lbs
Stance: 25° wide
21° front, -9° back
Home Mountain Range:
Coastal Mountains, BC.
Boards: Flagship 161, 164,
Hovercraft 156, Mtn Twin 160w



Marcin Jaskółka - Poland
Height: 184 cm/ 6,04 ft
Weight: 163 lb
Stance: 58 cm/ Goofy
21° front, 3° back
Foot size: 10 US
Home Mountain Range:
Tatra Mountains, Zakopane
Resort: Ski Centrum Pracica
Boards: Flagship 161, 164,
Solution 161



Mikka Hast - Finland
Height: 70 kg
Foot size: 8 US
Stance: Regular
Home Mountain Range:
Scandinavian Alps
Resort: Ruka
Boards: Flagship 161,
Solution 161, Mtn Twin 159



Ryland Bell - USA
Height: 6'0"
Weight: 180 lbs
Foot size: 9.5
Stance: Regular
Home Mountain Range:
Fairweathers, A.K.
Resorts: Squaw Valley
Boards: Flagship 161 & 164,
Solution 164



Alex Yoder - USA
Height: 6'0"
Weight: 160 lbs
Stance: Goofy
Home Mountain Range:
Teton Range
Resort: Jackson Hole
Boards: Mtn Twin 159,
160w, Mtn Twin 159 Split



Ralph Backstrom - USA
Height: 5'9"
Weight: 185 lbs
Foot size: 10 US
Stance: Regular, 23.5",
27° front, -15° back
Home Mountain Range:
Sierra Nevada
Resort: Squaw Valley
Boards: Flagship 164,
Solution 164



Forrest Shearer - USA
Height: 5'10"
Weight: 155 lbs
Foot size: 9.5
Stance: Goofy
Home Mountain Range:
Wasatch
Resorts: Snowbird, Brighton
Boards: Flagship 161,
Hovercraft 156,
Mtn Twin 159 & 159 Split



Jonaven Moore - Canada
Height: 6'0"
Weight: 165 lbs
Foot size: 9.5
Stance: Goofy
Home Mountain Range:
Coast Range, B.C.
Resorts: Whistler
Boards: Flagship 164,
Mtn Twin 160w,
Solution 164



Neil McNab - UK
Height: 6'2" (186cm)
Weight: 90 kg
Foot size: 11.5 US
Stance width: 68/70cm
24° front, -6° back
Occupation - Freerider / UIAGM
High Mtn & Backcountry
Snowboard Guide
Home Mountain Range:
Chamonix Mont Blanc

USA / CANADA
NIDECKER US INC
Bellingham, WA 98226
2200 Rimland Drive, Suite 300
Bellingham, WA 98226
(360) 393 4741
(360) 306 8473 Fax
sales@jonessnowboards.com

SWITZERLAND
NIDECKER SWITZERLAND
Place de l'industrie 2
1180 Rolle
Switzerland
+41 21 822 33 33
+41 21 822 33 31
info@nidecker.ch

FRANCE
SPORTPULSION
P.A.E de la Caille
74350 Allonzier la Caille
+33 4 50 46 50 50
+33 4 50 46 50 51
snow@sportpulsion.fr

BELGIUM
PACIFIC BOARDSHOP
Bruul 79 2800 Mechelen
+32 015 20 35 85
+32 015 20 39 35
marc.boydens@
pacific-boardshop.com

GERMANY
ELEMENT SPORTS
GMBH & CO. KG
Samerstrasse 1 83022 Rosenheim
+49 (0) 8031 243 1151
+49 (0) 8031 234 1155
distribution@element-sports.de
www.element-sports.de

POLAND
DINAKO S.C
Str. Schregera 85
01828 Warsaw
+48 22 824 31 73
+48 22 824 31 73
biuro@nidecker.com.pl
www.nidecker.com.pl

NETHERLAND
NEWSPO RTS BENELUX
JW Frisostraat 20
2713 CE Zoetermeer
+31 6260 14 777
+31 8 778 45 997
bert@newsports.nl
www.newsports.nl

CZECH REPUBLIC
SNOWBOARDS S.R.O
Na Roudne 80
Plzen 30165
+420 775 91 98 55
+420 377 53 02 58
lukas.puchta@seznam.cz

UNITED KINGDOM
THE SNOWBOARD ASYLUM
Wellington Mill, Duke Street
Manchester, M3 4NF.
Phone: +44 870 444 8770
Fax: +44 161 743 3839
jeremy@snowboards-asyllum.com

UKRAINE
Backcountry Team
Revutskogo Str. 35 - 233
UA - 02068 KIEV
+38 0672165681
team@backcountryteam.com

CHINA
NIDECKER CHINA
Binsheng Road No. 3911, Honghua
Digital Building, 11th floor
Binjiang District, Hangzhou City
310052 Hangzhou, Zhejiang,
P.R. China
0086 571 87113888, 87113830
0086 571 87113800

AUSTRALIA
Rush Distribution Pty Ltd
75 Stephenson Street,
Richmond, VIC, 3121
+613 9429 6699
+613 9429 4088
edward@rush.net.au

GREECE
3 SIXTY
Kalavrita Achaia 25001
+30 269 202 30 27
+30 269 202 44 34
info@3sixty.gr

RUSSIA
KANT
Electrolitnj Prozed 7B
115230 Moscow
+7 910 40 72821
r.kadymov@kant.ru
www.kant.ru

BULGARIA
One EAD
Mladost 1A 510-2-25. 1729 Sofia
+359 88 674 6466
kosta@onedistribution.com

JAPAN
Murasaki Sports
7-14-5 Ueno, Taiko-ku, Tokyo
takashi_kosugi@murasaki.co.jp
+81 70 6948 6414

LATVIA
SIA RB Projekts
M. Mzeja 1-9. 1050 Riga
renars@boards.lv
+371 261 300 44

FINLAND
Cohkka Guiding and Events
Fellmaninkatu 1C 25. 15110 Lahti
jarkko.henttonen@hdpfilms.com

AUSTRIA
Motion Sports
Eitnergasse 7. 1230 Wien
+43 1 617 42 82 117
stefan@motion-sports.at

ITALY
Wave Distribution
Via del Novelli 35/C. 23899 Robbiate
+39 347 499 9218
alex@wavedistribution.it

2 hours into his day, 3 hrs from camp and 65 miles to the closest town, the consequence could not have been higher for Jeremy as he drops into the verticle world on the Solution 164. Falling is not an option. Fairweather Range, AK

Front Cover: Jeremy Jones and Jonaven Moore take the party line back to camp after a heavy morning in Jonaven's backyard. Tantalus Range, BC, Canada. Photo Dan Milner.